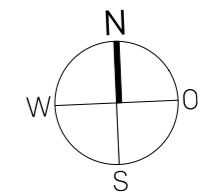




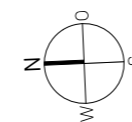
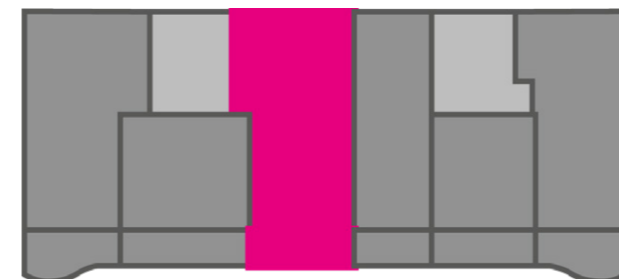
Unverbindliche Visualisierung



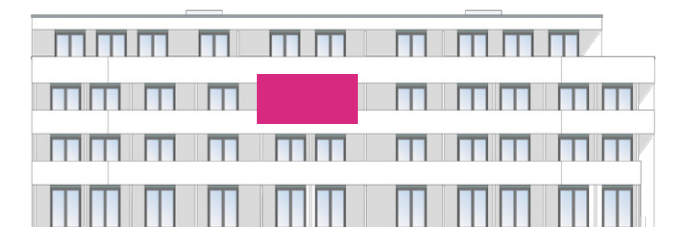
Maßstab 1:50



Wohnen/Essen/Küche	28,18 m ²
Schlafen	12,04 m ²
Kind	10,10 m ²
Bad	6,06 m ²
Flur	6,26 m ²
Abstellraum	1,13 m ²
Balkon (50%)	5,27 m ²
DIN-Wohnfläche ges.	69,04 m²
(inkl. 1% Putzabzug)	



Haus D40



Ansicht West

**BAU
STOLZ**

Sindelfingen-Maichingen
Haus D40

2. Obergeschoss